



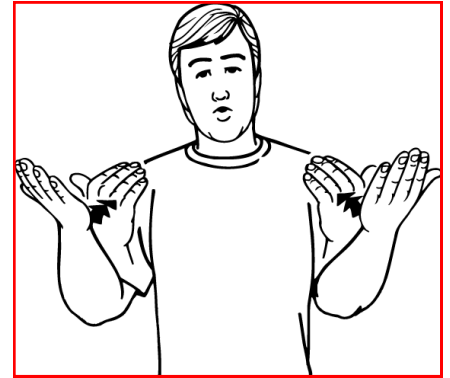
Newsletter

March 2019



Kia ora, talofa lava, and hello!

APODC is: a not-for-profit, inclusive organisation, made up of parents and carers with a deaf or hearing impaired child. All needs, communication methods, and cultural backgrounds are welcome here!



What we do: APODC runs a wide range of fun social, and information sharing events, that bring families together. Developing networks of peer support and friendship, help us celebrate our achievements and who we are, whilst meeting the challenges along the way.

Our goal: APODC children reaching their full potential.

Please renew your 2019

FAMILY MEMBERSHIP (\$20)

ASB: 12-3011-0757651-00

In this edition:

- 18th March, Sign Cafe
- 24th March Joint family games, and picnic afternoon with ADS & First Signs
- 30th March—Oticon/Ponto teddy bears picnic
- April school holidays—Holiday program (TBC)
- THE BIG ONE 28th April Family Afternoon @ BUTTERFLY CREEK & AGM
- Website launching soon!

LET COME TOGETHER
TO CELEBRATE
SUMMER!



THE 2019 AUCKLAND DEAF SOCIETY,
AUCKLAND PARENTS OF DEAF CHILDREN &
DEAF AOTEAROA FIRST SIGNS

WHANAU PICNIC!

24 MARCH 2019 | 11 AM - 3 PM

POTTERS PARK, BALMORAL ROAD,
OPPOSITE AUCKLAND DEAF SOCIETY

We will have face-painting, activities, games, a lolly scramble, entertainment and of course the traditional races including the egg and spoon race, sack races and the famous tug-o-war! Kids drinks, water and prizes will be provided by Auckland Parents of Deaf Children. The Deaf Aotearoa First Sign Team will be providing a bouncy castle!

BOUNCY
CASTLE!!

FACE PAINTING

TO HELP US PLAN, LET US KNOW
YOU ARE COMING EMAIL US AT:
taryn@auckland-deaf.org.nz,
coordinator@apodc.org.nz or
natasha.cloete@deaf.org.nz

TUG-O-WAR

GRANDPARENTS,
AUNTS, UNCLES
& COUSINS ARE
WELCOME TOO!

WHAT TO BRING
PICNIC LUNCH,
BLANKET OR
SOMETHING TO
SIT ON, A BALL OR
PLAY EQUIPMENT,
SUNSCREEN, SUN
UMBRELLA & THE
WHOLE FAMILY.

EGG &
SPOON RACE

Free parking is available in the Auckland Deaf Society carpark on a first come basis (come early) or on surrounding streets. Paid parking is available in the carpark next door.

**NORTH
HARBOUR HIRE**
Trades Contractors Handymen
09 478 9480

Thank you to North Harbour Hire who are generously supplying a generator for the day.



EVERY SECOND MONDAY

11.30AM - 2PM

DELICIOUS HOMEMADE FOOD & NON-ALCOHOLIC DRINKS

4TH & 18TH FEBRUARY 4TH & 18TH MARCH

These are made and served in conjunction with Kelton Deaf Education Centre Tu Kokiri Students and our very own Israel Armstrong.

**164 BALMORAL ROAD,
BALMORAL**

Everyone is welcome! Pop in for yummy food and a chat!

Espresso Coffees

Smoothies

Yummy Food



THIS IS A CHILD-FRIENDLY EVENT WITH A NEW CARPETED FLOOR & TOYS ARE AVAILABLE FOR YOUR CHILDREN TO PLAY WITH.

KID FRIENDLY EVENT



Special Family Afternoon at Butterfly Creek Including AGM

Sunday 28th April, 2-5pm,

10 Tom Pearce Drive, Auckland Airport

FREE to Members: All attractions + 1 train ride!



PLACES ARE LIMITED

RSVP to confirm your spot:
coordinator@apodc.org.nz
022 0842244

We require 1 adult per family, to attend the AGM please



**The new APODC website is not far away from
LAUNCH!**

More info to follow shortly.....

APRIL HOLIDAY PROGRAM: Taking Interest NOW!



ADS and APODC ran a holiday program in October last year. **We want to know if you would like a re-run in the April (Easter) holidays; 1 day each week?** The venue will be Auckland Deaf Society, Balmoral Rd.

We need to know:

1) How many families and whanau are interested ?

AND

2) If you are available to help out 1 day, or half day?

CONTACT CAT: 022 0842233/ coordinator@apodc.org.nz

Activities include:

- | | |
|---------------------|----------|
| * Baking | Playball |
| * Signed story time | Jump Jam |
| * Arts and crafts | Drama |
| * Giant hippo games | |

PLEASE SHARE YOUR IDEAS WITH US

FACEBOOK: <https://www.facebook.com/groups/981153361914892/?>



Come & join Oticon Medical at our inaugural

**TEDDY BEAR'S
PICNIC**

**ALL
WELCOME**

DATE: Saturday, 30 March
TIME: 12 - 3pm
PLACE: The Hearing House
251 Campbell Road,
AUCKLAND



An opportunity for all of our Ponto children and their families to come together for fun, food and support. There will be an opportunity for mums and dads to hear all about advances in the field of bone anchored hearing.

Please RSVP to Minnie Sahai by 22 March 2019
mhsi@oticon.com

oticon
MEDICAL



Whoa Studios, Sunday 10th March

14 families and whanau enjoyed a morning (and afternoon for some!), at Whoa Studios last Sunday. We are really growing as a collective, and it's great to see people getting lots of value from their memberships.

The sun shone for us, and families provided some awesome testimonials on the value of APODC for their family. These will be used to bring our new website alive.

If you weren't at Whoa, but want to share something about your time at APODC, or a photo, for the website, please send it my way: coordinator@apodc.org.nz



FOR YOUR CALENDAR

| | |
|--|---|
| 18th March 11.30-2pm Sign Café (Deaf Club) | Auckland Deaf Society, 164 Balmoral Road, Mount Eden <p>Child friendly opportunity to meet, mingle, and enjoy yummy food, whilst practising your NZSL!</p> |
| Sunday 24th March, 11am-3pm Joint picnic with ADS and First Signs | Potters Park, Balmoral Road, Mount Eden <p>Where do we start! We have a clown, face painter, traditional park races, opportunities for sign with the Deaf Community, a bouncy castle, and First Signs, and ADS as our partners.</p> |
| Saturday 30th March, 12-2pm Oticon Teddy Bears Picnic | The Stichbury Bidwill Centre, The Hearing House, William Avenue, Greenlane <p>This is an event for kids and families who use Oticon/Ponto aids. Come and get support and find out the latest.</p> |
| 4th April, 7.30-10pm Committee Meeting | The Stichbury Bidwill Centre, The Hearing House, William Avenue, Greenlane <p>Whether you are new, or an APODC veteran, we would love to have your input as we develop our organisation.</p> |
| 28th April, 2-5pm Butterfly Creek family afternoon & AGM | 10 Tom Pearce Drive, Auckland Airport <p>Come along to this highlight event of 2019. We have access to all attractions, and we will enjoy your company at our AGM</p> <p>1 adult per family to attend AGM please</p> |

Join APODC on Facebook

<https://www.facebook.com/groups/981153361914892/?ref=ts&fref=ts>