



August Newsletter



Inflatable World, Sunday, 4th August

Faustine Yan, & Lauree Armstrong (Resource Teacher of the Deaf-South Auckland Team), show us the value of joint events, bringing professionals, families and whānau together.

27 families attended, alongside 15 KDEC staff attended on Sunday, and had a blast!

Thank you Catherine, Lynn and the KDEC team. You are fabulous to work with. Nurturing connections with families and whānau in this way, makes a real difference. Thank you.

Thanks too to our wonderful President, Kirsten Davis, and Committee members Jo Weaver, and Viv Arkles. Kirsten welcomed attendees, and delivered an update on APODC activity, whilst looking after her own kids (the pinnacle of multi-tasking!). Jo and Viv were also busy connecting with new families, and looking after their own.

It is the team behind APODC which make all our events possible. A heartfelt thank you.

Can you give 2 hours to help host an APODC event?

[Volunteer](#)

Hosting involves:

- Welcoming people at the door
- Signing them in on the register
- Telling them what's happening, and when
- Having a chat!



August Newsletter



Inflatable World, Sunday, 4th August

Faustine Yan, & Lauree Armstrong (Resource Teacher of the Deaf-South Auckland Team), show us the value of joint events, bringing professionals, families and whānau together.

27 families attended, alongside 15 KDEC staff attended on Sunday, and had a blast!

Thank you Catherine, Lynn and the KDEC team. You are fabulous to work with. Nurturing connections with families and whānau in this way, makes a real difference. Thank you.

Thanks too to our wonderful President, Kirsten Davis, and Committee members Jo Weaver, and Viv Arkles. Kirsten welcomed attendees, and delivered an update on APODC activity, whilst looking after her own kids (the pinnacle of multi-tasking!). Jo and Viv were also busy connecting with new families, and looking after their own.

It is the team behind APODC which make all our events possible. A heartfelt thank you.

Can you give 2 hours to help host an APODC event?

[Volunteer](#)

Hosting involves:

- Welcoming people at the door
- Signing them in on the register
- Telling them what's happening, and when
- Having a chat!

[RENEW MEMBERSHIP](#)

Please remember to renew your families membership

1, 2, & 3 year options. Sign up for 3 years & forget about it!

The annual membership fee (\$20) will be charged at the start of each year, during your chosen membership period. You will receive a renewal notice once the membership period expires.



COFFEE GROUP: *Join us for coffee, and indoor play*
Sunday 8th September, 10am.
Bunnings, Corner of Burswood & Ti Rakau Drive, Botany,

Book to attend

This Coffee group is for those with babies and young children, under 6yrs (siblings welcome)
Connect with others of a similar age and stage
If you live in South Auckland, this is a great opportunity to meet other local families and whānau
For those from other parts, it's a great excuse for a trip out!

1 FREE adult hot drink, per attending adult.



CHECK OUT OUR NEW WEBSITE!

www.facebook.com/aucklandparentsofdeafchildren.com/

Like 68K

Share

Follow

Save to Facebook

Please **FOLLOW** and **SHARE** the **NEW APODC Facebook page** &
Support us to continue to provide great events, for great families with deaf children.

Be the difference

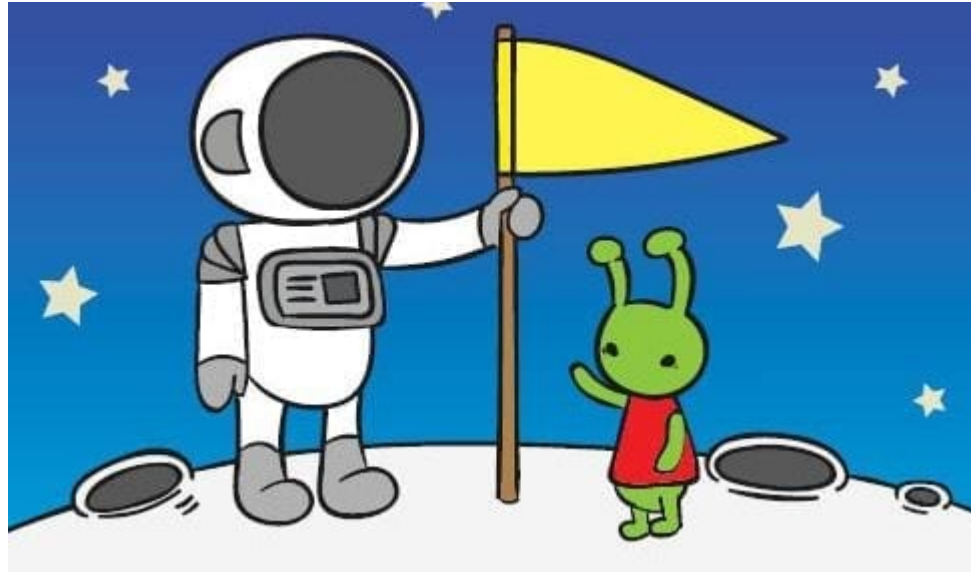
Are you willing to share your ideas to make APODC the very best it can be?
We are reaching more new families each week, and we need parents and caregivers to help guide us forward.
If you are a member, you can help

RSVP for our **Strategic Planning Meeting**: coordinator@apodc.org.nz

Sunday 22nd September 10.30-3.30pm, Greenlane



Stardome, Sunday 25th August, 1.45pm



Come and explore what's out there with us....

Bring the family along, and find out more about our galaxy. What are we made of? Where did it all come from? Discover the secrets of our cosmic chemistry, and our explosive origins.

'We Are Stars' Planetarium show at 2pm.
PLEASE ARRIVE BY 1.45PM. NO LATE ENTRY!

Please book a ticket for **EVERY** person who will be attending, and complete the required field information.

[Book To Attend](#)

CAMP is on its way!!

Starts 6pm, Friday 28th February - finishes 2.30pm, Sunday 1st March 2020,
Camp Carey Park, 397 Henderson Valley Road, Waitakere

A huge THANK YOU to:

**The NZSL Board,
The Trillion Trust and
The 5 Auckland COGS Committees**

for generously providing grants to allow us to subsidise family places at camp 2020.

Camp is a highlight for many APODC families as it provides an extended period of time to really connect with others, share stories, information and support, kick back, and have fun together.

Carey Park offers a range of the best activities to suit all tastes and needs.
Families share clean and comfortable dormitory style rooms with bunk beds.

We will let you know the cost for families as soon as this is confirmed!

[Register your interest](#)



RENEW MEMBERSHIP

Please remember to renew your families membership

1, 2, & 3 year options. Sign up for 3 years & forget about it!

The annual membership fee (\$20) will be charged at the start of each year, during your chosen membership period.
You will receive a renewal notice once the membership period expires.



COFFEE GROUP: Join us for coffee, and indoor play
Sunday 8th September, 10am.
Bunnings, Corner of Burswood & Ti Rakau Drive, Botany,

Book to attend

This Coffee group is for those with babies and young children, under 6yrs (siblings welcome)
Connect with others of a similar age and stage
If you live in South Auckland, this is a great opportunity to meet other local families and whānau
For those from other parts, it's a great excuse for a trip out!

1 FREE adult hot drink, per attending adult.



CHECK OUT OUR NEW WEBSITE!

www.facebook.com/aucklandparentsofdeafchildren.com/

Like 68K

Share

Follow

Save to Facebook

Please FOLLOW and SHARE the NEW APODC Facebook page & Support us to continue to provide great events, for great families with deaf children.

Be the difference

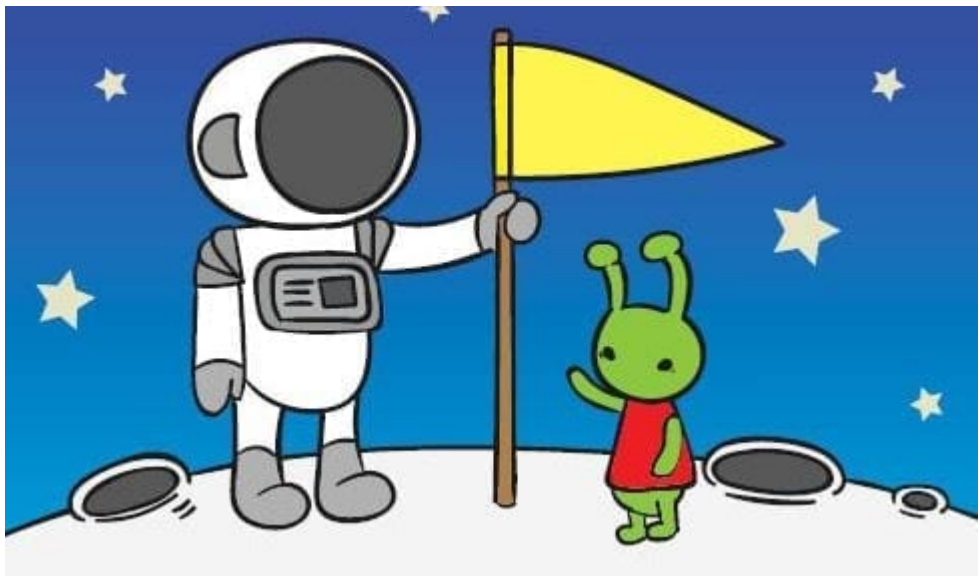
Are you willing to share your ideas to make APODC the very best it can be?
We are reaching more new families each week, and we need parents and caregivers to help guide us forward.
If you are a member, you can help

RSVP for our Strategic Planning Meeting: coordinator@apodc.org.nz

Sunday 22nd September 10.30-3.30pm, Greenlane



Stardome, Sunday 25th August, 1.45pm



Come and explore what's out there with us....

Bring the family along, and find out more about our galaxy. What are we made of? Where did it all come from?
Discover the secrets of our cosmic chemistry, and our explosive origins.

'We Are Stars' Planetarium show at 2pm.
PLEASE ARRIVE BY 1.45PM. NO LATE ENTRY!

Please book a ticket for EVERY person who will be attending, and complete the required field information.

Book To Attend

CAMP is on its way!!

*Starts 6pm, Friday 28th February - finishes 2.30pm, Sunday 1st March 2020,
Camp Carey Park, 397 Henderson Valley Road, Waitakere*

A huge THANK YOU to:

**The NZSL Board,
The Trillion Trust and
The 5 Auckland COGS Committees**

for generously providing grants to allow us to subsidise family places at camp 2020.

Camp is a highlight for many APODC families as it provides an extended period of time to really connect with others, share stories, information and support, kick back, and have fun together.

Carey Park offers a range of the best activities to suit all tastes and needs.
Families share clean and comfortable dormitory style rooms with bunk beds.

We will let you know the cost for families as soon as this is confirmed!

Register your interest



Copyright © *2019 APODC - Auckland Parents of Deaf Children. All rights reserved.

Our mailing address is:

Auckland Parents of Deaf Children Inc
PO Box 202001 Southgate,
Takanini Auckland – 2246

Contact Details:

Phone: +64 022 08 244
Email: coordinator@apodc.org.nz

Want to change how you receive these emails?
You can [update your preferences](#) or [unsubscribe from this list](#).



Our mailing address is:

Auckland Parents of Deaf Children Inc
PO Box 202001 Southgate,
Takanini Auckland – 2246

Contact Details:

Phone: +64 022 08 244
Email: coordinator@apodc.org.nz

Want to change how you receive these emails?

You can [update your preferences](#) or [unsubscribe from this list](#).