



## July 2024 - Newsletter

Kia ora #FirstName#

### President's Update

I hope you're all keeping yourselves warm as winter is certainly here! But at least the sun was shining at our latest **family day** event at the end of May. It was lovely to have so many of you attend our **AGM**, and come together as a community to welcome **Clare Best**.

Clare also shared her knowledge and passion with us in her workshop that same weekend. We've had **overwhelmingly positive feedback** from our parents and NZ Deaf educators who attended - [click here if you would like to share your feedback](#). It has been great to hear stories of parents who feel more confident and empowered as they continue to **advocate for their children's rights**.

This month we have the second instalment of our **free webinar series**, hosted by Clare Best, entitled **Language Acquisition in the Early Years**. Scroll down to find out more about the webinar and how to register.

We've heard through the grapevine that the **Ko Taku Reo** advisory board has been disbanded after a recent review of the statutory intervention (the need for the school to have a commissioner).

**Education** continues to be top of mind for the APODC committee. We want to ensure that we continue to **support our community** as they navigate what's best for their tamariki. We will continue to ask Ko Taku Reo how it is getting **parent and community input** into the needs of the children they are educating and we will share any information we have to help give you the knowledge needed to advocate for your child/ren. **If you have any questions please speak to your Ko Taku Reo representative.**

Hand waves 🖐️

Willa Hand on behalf of your APODC Committee ~ Anna Park, Duncan Henderson, Jo Weaver, Lydia Cook, Rhian Thompson

## APODC EVENTS

**APODC** *Connect*





Register now to attend the second webinar in our online series hosted by Clare Best of Raising Bilinguals - **Language Acquisition in the Early Years**

**Date:** Sunday 28th July

**Duration:** 45 minutes (plus 15 mins for Q&A)

**Start Time:** 7pm

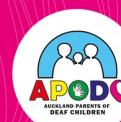
Join Clare from Raising Bilinguals for an insightful online workshop covering all things **language acquisition** for deaf children in the early years of development.

Clare will explore the critical importance of early and **quality intervention**, the need for access to **native signing and spoken models**, and strategies for **building a rich vocabulary**. She will also unpack the **power of interactive reading** and **storytelling** for Deaf and Hard of Hearing children through signed and spoken modalities.

This workshop is designed to **empower parents with practical tools** to support and enhance the language development of their young deaf child!

[Click here to register](#)

## Under 5's COFFEE GROUP



**Have a coffee on us!** Join us at this family friendly cafe to meet and mingle with other parents, hosted by our Secretary Lydia Cook.

**Date:** Saturday 27th July

**Time:** 10am until 12pm

**Address:** [Albany Mitre10 Mega 260 Oteha Valley Road, Albany, 0632](#)

We will continue to rotate locations each month to make them accessible for everyone.

[Click here to register](#)

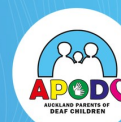
## SAVE THE DATE APODC CAMP 2025

Planning for the APODC Camp 2025 is underway! Save the date and join us for a weekend to remember:

**Friday 21st - Sunday 23rd February 2025**

To keep things fresh, and to cater for the growing number of families excited to attend, APODC Camp 2025 will be at a new location - The Y Camp Adair - We'll see you there!

## APODC AGM 2024



Register now for Auckland Deaf Society's semester 2 of NZSL courses. If you would like any further information please email [nzsl@auckland-deaf.org.nz](mailto:nzsl@auckland-deaf.org.nz)



# Learn NZ Sign Language

Join our NZSL Community Classes run by Auckland Deaf Society

**Semester 2, 2024**  
Term 3: 22 July - 13 September (8 weeks)  
Term 4: 13th October - 28th November (7 weeks) + Monday 2 December

Beginner 1		
Kelston	Mondays	7pm - 9pm
Three Kings	Tuesday Mornings	10.30am - 12.30pm
Online	Tuesday Mornings	9.30am - 11am
Three Kings	Tuesdays	7pm - 9pm
Three Kings	Wednesdays	7pm - 9pm
Online	Wednesdays	6pm - 7.30pm
Browns Bay	Thursdays	7pm - 9pm

Beginner 2		
Online	Tuesdays	6pm - 7.30pm
Bayview	Wednesdays	6.30pm - 8.30pm
Three Kings	Thursdays	7pm - 9pm

Intermediate 1		
Three Kings	Mondays	7pm - 9pm

Intermediate 2		
Three Kings	Thursdays	7pm - 9pm

Intermediate 3		
Three Kings	Tuesdays	7pm - 9pm

**Auckland Central**  
16 Hillsborough Rd, Three Kings

**North Shore**  
2 Glen Rd, Browns Bay  
8.72 Bayview Rd, Bayview

**West Auckland**  
1 Archibald Rd, Kelston

**Online**  
Zoom

Register Online at [auckland-deaf.org.nz](http://auckland-deaf.org.nz)  
15 Week Courses | Online: \$200 incl GST | In Person: \$260 incl GST  
For further information or general enquiries, please contact the NZSL Administrator, email: [nzsl@auckland-deaf.org.nz](mailto:nzsl@auckland-deaf.org.nz) | Phone: (09) 630 6980

## NZSL Coffee Club



# NZSL Coffee Club

Join us for our monthly coffee group meetups on the first Sunday of every month. Calling all NZSL students, regardless of your level - you are more than welcome to join us!

Our fantastic NZSL tutor will support you and engage in conversations over a cup of coffee.

It's an opportunity to practice your NZSL skills in a friendly environment while meeting new people and catching up with old friends.

Take advantage of this fantastic chance to immerse yourself in the beauty of NZSL and connect with a vibrant community.

**Auckland**  
Crave Cafe  
6 Morningide Drive,  
Morningide, Auckland

**Christchurch**  
Black Betty  
165 Madras Street,  
Central City, Christchurch

Every first Sundays  
(10:00am - 12:00pm)

3rd March  
7th April  
5th May  
2nd June  
7th July

4th Aug  
1st Sept  
6th Oct  
3rd Nov  
1st Dec

\*A few more locations & Online to come in Term 2

If you have been learning NZSL and want a friendly and welcoming community to practice your newfound skills, this could be the place for you.

NZSL4U are running a coffee club in Auckland on the first Sunday of each month from 10am - 12pm

To learn more about what NZSL4U have to offer check out their website and Facebook page:

Website: [NZSL4U.co.nz](http://NZSL4U.co.nz)

Facebook Page: [www.facebook.com/nzsl4u](https://www.facebook.com/nzsl4u)

## Sign Play Together - Playgroup

First Signs, in collaboration with The Hearing House, have expanded their playgroup offerings. Their Wednesday morning group is now fortnightly and they have set up an additional weekly Saturday morning group. Check out their flyers below for more details.



## SIGN PLAY TOGETHER - Fortnightly Auckland 2024



Come and Join us at "SIGN PLAY TOGETHER" on **FORTNIGHTLY** Wednesday mornings at The Hearing House!

We will learn NZSL, play, read books and HAVE FUN together! Your First Signs Facilitators will organise a fun and educational programme for your preschoolers in NZSL.

Your children will have the opportunity to meet other Deaf or Hard of Hearing children like themselves, and use NZSL to communicate!

📅	FEB: 14, 28	JUN: 5, 19	OCT: 9, 23
	MAR: 13, 27	JUL: 3, 17, 31	NOV: 6, 20
	APR: 10, 24	AUG: 14, 28	DEC: 4
	MAY: 8, 22	SEPT: 11, 25	

🕒 10:00 AM to 12:00 PM

📍 The Hearing House, 251 Campbell Road, Greenlane, Auckland



## SIGN PLAY TOGETHER - Saturdays Auckland 2024



Come and Join us at "SIGN PLAY TOGETHER" at The Hearing House every first Saturday of the month!

We will learn NZSL, play, read books and HAVE FUN together! Your First Signs Facilitators will organise a fun and educational programme for your preschoolers in NZSL.

Your children will have the opportunity to meet other Deaf or Hard of Hearing children like themselves, and use NZSL to communicate!

📅	10th February	8th June	5th October
	2nd March	6th July	2nd November
	6th April	3rd August	7th December
	4th May	7th September	

🕒 10:00 AM to 12:00 PM

📍 The Hearing House, 251 Campbell Road, Greenlane, Auckland



For more information, please contact  
First Signs:

[first.signs@deaf.org.nz](mailto:first.signs@deaf.org.nz)



For more information, please contact  
First Signs:

[first.signs@deaf.org.nz](mailto:first.signs@deaf.org.nz)



## Tim Bray Theatre Company



### Five Go on an Adventure NZ Sign Language Interpreted shows

**Dates:** Saturday 20th July at 10:30am

**Time:** 10.30am

**Venue:** The Pump House Theatre, Takapuna

[Click here to book tickets!](#)

After the sell-out 2023 season of Enid Blyton's *The Magic Faraway Tree*, children of all ages (and their grown-ups) won't want to miss this terrific tale.

**Oh, what a marvellous adventure!**

Julian, Dick and Anne, their cousin George, and dog Timmy, head off together on an adventure and end up having to solve a dastardly mystery. Along the way they meet some frightfully awful baddies and get into all sorts of scrapes. Luckily, our five heroes are famous for getting out of trouble!

With courage, capers and plenty of sandwiches and ginger beer, this Tim Bray Theatre Company show reminds us all that fun, friendship and fortitude always fool the felons! Hoorah!

## WHAT'S ON?

## 2024 ACCESS CENTRE Pukekohe



### WE CAN PROVIDE:

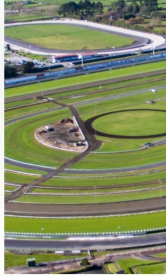
- Opportunity to have a chat and to meet other Deaf people.
- Free information and support services
- Advice
- Translation support (e.g. support with reading letters and forms etc.)
- New ideas for ACE workshops
- Information about Deaf Aotearoa services
- Information about assistive equipment for Deaf/hard of hearing.
- presenters from government agencies, service providers etc.

Thursday once a month  
14th March  
11th April  
9th May  
13th June  
11th July  
8th August

10:30 AM - 2:30 PM

Franklin The Centre -  
Edmund Hillary Room,  
12 Massey Avenue, Pukekohe 2120

Support with travel  
cost may be available  
to those that need it



You want more  
information,  
contact who?

KERRY  
LOTZ

021 723 780 text only  
kerry.lotz@deaf.org.nz

## Deaf Aotearoa - Access Centre

Visit the Access Centre for the Deaf and Hearing Community **this Thursday**.

**When:** Thursday, once a month, 10.30am - 2.30pm.

**Where:** [Franklin The Centre, Edmund Hillary Room, 12 Massey Avenue, Pukekohe](#)

- Learn more about Deaf Aotearoa services
- Information about assistive equipment for DHH
- Meet representatives from government agencies and service providers
- Meet Deaf people
- and more...

If you want more information contact **Kerry Lotz**:

**Text only:** 021 723 780

**Email:** [kerry.lotz@deaf.org.nz](mailto:kerry.lotz@deaf.org.nz)

## Ngā Aukaha – all in for Tamariki



**Ngā Aukaha – all in for Tamariki** is an NZEI campaign that is focusing on Learning Support and specifically about **increasing learning support provisions in early childhood centres and schools**.

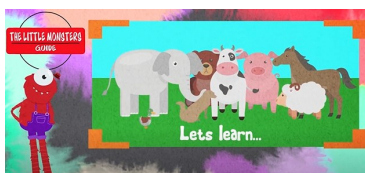
[Click here](#) to find out more and get involved in the campaign

The two **key priorities** to be focused on for the 2024/25 and 2025/26 years are:

- Increased dedicated teacher aide funding in early childhood centres and schools.
- Increase the number of specialists e.g., psychologists, KTW, EITs, SLTs, AODCs, physiotherapists, resource teachers to meet student need.

On **Saturday August 29th**, there will be a **Learning Support Awareness Day** held across the country. This will be an opportunity to highlight the issues and get teacher, teacher aide, whānau, parent and student stories heard.

## Representation and Resource Recommendations

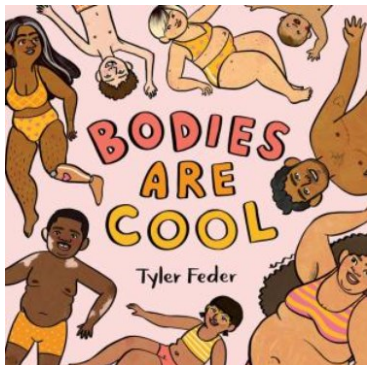


### Animals in Te Reo and NZSL

Reel Motion Design

In this video, you can learn ANIMALS in NZSL and Te Reo using NZSL videos from the [NZSL online dictionary](#) and audio for the Māori pronunciation from the [Te Aka Māori Dictionary](#)

Learn and sign along with your little one - [Click here to watch](#)



## Bodies are Cool

Written by Tyler Feder

This cheerful love-your-body picture book for preschoolers is a pure celebration of all the different human bodies that exist in the world. Highlighting the various skin tones, body shapes, and hair types is just the beginning in this truly inclusive book. With its joyful illustrations and encouraging refrain, it will instill body acceptance and confidence in the youngest of readers.

**Reading age:** 3-5 years old

Available at your local Auckland Library: [Click here to request](#)

**Nga mihi nui, APODC Committee**

---



sent by [vega.works](https://vega.works)

[unsubscribe](#)